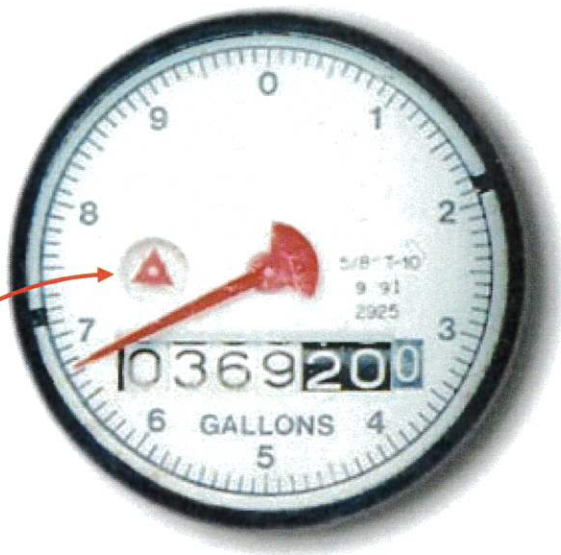


HOW TO READ YOUR RESIDENTIAL WATER METER

Notice that your residential water meter has only one dial. The dial has a sweep hand which measures water usage in gallons. One complete revolution equals ten gallons of water used. The odometer-type register in the middle of the dial registers the hundreds of gallons used.

To read the meter you record the numbers from the odometer-type register. (The last number is a permanent number and will also be used) Subtract the previous reading from the new reading and you will know how many gallons of water you have used.



This meter is reading 369,200 gallons.

HOW TO CHECK FOR A LEAK

If you currently have all the water off at your residence (inside and outside) and the red triangle is spinning, this indicates a leak.